

Model itineraries for time-efficient tours of the seven municipalities in the Inaba-Tajima region for both the sea and mountain sides
Enjoy the tradition, nature, and food culture of each area.

Seaside Itinerary for Fully Enjoying the Japan Heritage Site

Kami Town ▶ Shinonsen Town ▶ Iwami Town ▶ Tottori City

DAY 1
 Throughout the day
 Touring the Kasumi area (Daijōji Temple and Sea Taxi)
 Lunch
 Tajima Highlands Botanical Garden / KAN-ICHI
 Overnight stay
 Kami Town



DAY 2
 In the morning
 A tour whose highlights are Yoro Station, a remote station known for the breathtaking view it offers, and Sky Station Amarube, which are connected by a hyperlocal railway line (p. 15)
 In the afternoon
 A tour of Hamasaka, a sturdy town built on a sandbar that has survived in a harsh natural environment (p. 17)
 Lunch and sweets
 Hamasaka Shinkine / Roadside Station San'in Kaigan Geopark / Hamasaka no Sato
 Overnight stay
 Yumura Onsen



DAY 3
 In the morning
 Strolling around the Yumura Onsen area
 Lunch
 Obaa Cafe
 In the afternoon
 A tour of the westernmost part of the Tottori Sand Dunes, featuring Hakuto-no-oka, a spot with breathtaking views, as well as Hakuto Shrine (p. 05)
 Dinner
 Ho-enya / Pepenero Italia-kan
 Overnight stay
 Tottori City



DAY 4
 In the morning
 A walking tour of the San'in Kaigan Global Geopark Trail, which connects fishing villages in the Japan Heritage Site (p. 07)
 Lunch
 Minato Cafe Anchor
 In the afternoon
 Visiting the Tottori Sand Dunes and then various other places
 Dinner
 TEN FORWARD



Mountainside Itinerary for Fully Enjoying the Japan Heritage Site

Tottori City ▶ Yazu Town ▶ Wakasa Town ▶ Chizu Town

DAY 1
 Throughout the day
 Tottori Sand Dunes, Sand Museum, Tottori Castle Ruins, etc.
 Lunch
 Ho-enya
 Dinner
 Pepenero Italia-kan
 Overnight stay
 Tottori City



DAY 2
 Throughout the day
 A tour of stopovers along the Wakasa Railway line, guided by the Wakasa Railway Supporters' Club (p. 13)
 Overnight stay
 Wakasa Town or Yazu Town



DAY 3
 In the morning
 A tour of a train terminus and an old post town in a snowy province, allowing you to immerse yourself in olden-day life in Wakasa (p. 09)
 Lunch
 Teahouse Nohanabiyori / URUWASHI JAPANESE TEA
 In the afternoon
 Tasting popular pancakes and shopping at Oenosato Natural Farm
 Dinner
 Oenosato Village / OOE VALLEY STAY (IRORI)
 Overnight stay
 Yazu Town (OOE VALLEY STAY)



DAY 4
 In the morning
 A tour of historic spots: Chizu-juku, an olden-day post town known for its cedar forests nurtured by heavy snowfall, and the residence of the Ishitani family (p. 11)
 Lunch
 Brun de la Montagne
 In the afternoon
 Visiting various places



Short Japan Heritage Itinerary

Wakasa Town ▶ Tottori City ▶ Iwami Town

DAY 1
 In the morning
 A tour of a train terminus and an old post town in a snowy province, allowing you to immerse yourself in olden-day life in Wakasa (p. 09)
 Lunch
 Teahouse Nohanabiyori / URUWASHI JAPANESE TEA
 In the afternoon
 A tour of the westernmost part of the Tottori Sand Dunes, featuring Hakuto-no-oka, a spot with breathtaking views, as well as Hakuto Shrine (p. 05)
 Dinner
 Pepenero Italia-kan
 Overnight stay
 Tottori City



DAY 2
 In the morning
 A walking tour of the San'in Kaigan Global Geopark Trail, which connects fishing villages in the Japan Heritage Site (p. 07)
 Lunch
 Minato Cafe Anchor / TEN FORWARD
 In the afternoon
 Visiting the Tottori Sand Dunes, Sand Museum, Tottori Castle Ruins, etc. and then various other places



Project to Promote Regional Tourism Circulation

* Before deciding on your itinerary, please check train timetables, the business days and store hours, etc.

Japan Heritage Kirin-no-Machi Promotion Council

Kirin-no-Machi Tourism Bureau
 3rd floor, Toei Building, 3 Ogi-machi, Tottori City, 680-0846 Japan
 ✉ visitkirintown@tottori-inaba.jp



Themed Tours and Foods Guide

Kirin no Machi, Japan Heritage Site.



Inaba-Tajima, home to the Kirin,
 a Japanese Heritage Site
 Guide to Themed Tours and
 Delicious Local Specialties

Mysterious Lands and Mesmerizing Scenery Created by the
Wind Rising over the Sea of Japan

—The Lands Where the Sacred Beast, Kirin, Dances—

Inaba × Tajima



The Tottori Sand Dunes, one of the largest systems of sand dunes in Japan, are formed to perfection by the harsh winds gusting over the Sea of Japan.

The invisible shape of the wind is reflected in the wavy patterns of the wind ripples. If you proceed along the coast, you will find uniquely shaped rocks, carved by raging waves induced by the wind.

Traveling along the rapid stream of the river up to the Chugoku Mountains, which gave birth to the sand of the Tottori Sand Dunes, you will arrive at old mansions with a picturesque background of cedar forests enwrapped in heavy snow. If you travel further ahead, closer to the headwater, an ancient temple in a cave emerges.

The Kirin ("qilin" in Chinese) is a sacred mythological beast that has been regarded as a symbol of a peaceful world since ancient times due to its nature of never hurting other organisms. In the Inaba-Tajima region, the traditional performing art "Kirin Dance" has been handed down through the generations.

These are unexplored regions and marvelous scenery created by the wind of the Sea of Japan.

Living in these harsh windy seasons, local people hold in their hearts a prayer for safety, as well as their gratitude for overcoming these hardships. They continue to pass down the ancient Kirin Dance, which brings happiness not only to locals, but also to travelers encountering the Kirin.

I am **Kirinrin**, a mascot wearing a Kirin-inspired hood. I'll introduce you to the charms of the Inaba-Tajima region! Each tour itinerary has a theme color that represents "sand," "waves," "snow," or "Kirin Dance!"



Blessings of the sand nurtured by the wind



The Tottori Sand Dunes, one of the largest systems of sand dunes in Japan, show you various expressions.

The Hakuto Coast, located at the western end of the dunes, is famous as the setting for the story "White Hare of Inaba" in the Kojiki, an ancient Japanese mythological chronicle.

In this area, lagoons have long nurtured people's lives.

- Tottori Sand Dunes ■ Hakuto Shrine Forest
- Collection of Prehistoric Relics Unearthed at the Katsurami Archaeological Site
- Aoya-Kamijichi Archaeological Site ■ Hamasaka-Ajiwaragawa District in Shinonsen Town

Tour itineraries on this theme Tottori City ▶ pp. 05–06 Shinonsen Town ▶ pp. 17–18



Blessings of the waves nurtured by the wind



Raging waves have abraded the coasts, creating magnificent geological features.

Local people have long held a festival related to the legend of the fleeing remnants of the defeated Taira clan. The local fishing village flourished by displaying mastery over the raging waves.

The Sky Station offers a fascinating panoramic view.

- Uradome Coast ■ Tajima-Mihonoura Coast ■ Kasumi Coast ■ Amarube Viaduct Railway Bridge
- Momote Ritual ■ Fishing Villages on the Rocky Coast of Inaba and Tajima

Tour itineraries on this theme Iwami Town ▶ pp. 07–08 Kami Town ▶ pp. 15–16



Blessings of the snow nurtured by the wind



The local mountain villages flourished thanks to high-quality cedar wood, a gift of heavy snowfall. The tours on this theme feature Wakasa Railway and the townscapes of snowy districts.

- Fudoin Iwayado Temple ■ Kariya-dori Street ■ Residence of the Sanbyakuda Family ■ Main Residence of the Kishima Family ■ Storehouse Street ■ Hyonosen[SP1.1]-Ushiroyama-Nagisan Quasi-National Park ■ Residence of the Yabe Family ■ Residence of the Ishitani Family ■ Sugi Shrine
- Main Residence, Annex, and Nagaya-mon Gate of the Ota Family ■ Chizu-cho Itabara Preservation District for Groups of Historic Buildings ■ Chizu Forest landscape ■ 23 Wakasa Railway Cultural Assets, Including the Wakasa Station Main Building[SP2.1], Platform, and Railway Turntable

Tour itineraries on this theme Wakasa Town ▶ pp. 09–10 Chizu Town ▶ pp. 1–12 Yazu Town ▶ pp. 13–14



KirinDance, performed with gratitude and prayers for safety in the season of wind



The Kirin Dance has been passed on through the generations for 370 years.

Learn about the wisdom and history of people living with the wind.

- Kirin Dance of Inaba ■ Kirin Dance of Tajima ■ Taikoganaru at the Remains of Tottori Castle
- Jinpukaku ■ Tottori Toshogu Shrine ■ Ube Shrine ■ Hijiri Shrine Main Building, Worship Hall, and Offering Hall



For more details about the story of Inaba-Tajima as a Japan Heritage Site, scan this 2D code.

To the website "Japan Heritage Kirin no Machi" →





Area 01 Tottori City
A tour of the westernmost part of the Tottori Sand Dunes, featuring Hakuto-no-oka, a spot with breathtaking views, as well as Hakuto Shrine
▶ P05 ~ P06

Area 02 Iwami Town
A walking tour of the San'in Kaigan Global Geopark Trail, which connects fishing villages in the Japan Heritage Site
▶ P07 ~ P08

Area 07 Shinonsen Town
A tour of Hamasaka, a sturdy town built on a sandbar that has survived in a harsh natural environment
▶ P17 ~ P18

Area 06 Kami Town
A tour whose highlights are Yoro Station, a remote station known for the breathtaking view it offers, and Sky Station Amarube, which are connected by a hyperlocal railway line
▶ P15 ~ P16

Area 03 Wakasa Town
A tour of a train terminus and an old post town in a snowy province, allowing you to immerse yourself in olden-day life in Wakasa
▶ P09 ~ P10

Area 05 Yazu Town
A tour of stopovers along the Wakasa Railway line, guided by the Wakasa Railway Supporters' Club
▶ P13 ~ P14

Area 04 Chizu Town
A tour of historic spots: Chizu-juku, an olden-day post town known for its cedar forests nurtured by heavy snowfall, and the residence of the Ishitani family
▶ P11 ~ P12



Your gastronomic curiosity will take you on a journey.

Novel and traditional local specialties await you to provide a firsthand experience of the charms of the Japan Heritage Site of Inaba-Tajima. Restaurants, bars, and other food and beverage businesses in the area leverage the ingredients and gastronomic culture that are deeply rooted in the local communities to help make your journey more unforgettable.



Special! Local specialties!

Dishes made with ingredients from the Inaba-Tajima region, which allow you to savor the local climate and culture

Make your memories of the journey happier by enjoying local specialties made with ingredients that embody the local climate and culture of the Inaba-Tajima region, such as exquisite Wagyu beef from Inaba and Tajima, and squid, which is one of the locals' long-time favorites not only in the coastal areas but also mountainous districts.

Motif! Motifs!

Delicacies telling the story of this Japan Heritage Site

Sweets, beverages, and dishes, as well as packaged delicacies to take back home, inspired by the motifs of "sand," "waves," "snow," and "Kirin Dance," tell you the story of the Japan Heritage through joyful gastronomic experiences.

Legend for theme icons



* The price of each item shown here is subject to change without notice.

Wagyu beef The Inaba-Tajima region is the home of two exquisite Wagyu Beef brands: Tottori Wagyu, the top-prize winner in the meat quality category at the first National Wagyu Competition (1966), also known as the Wagyu Olympics, and Tajima Beef, the origin of Kobe Beef and Matsusaka Beef among Japan's most famous Wagyu brands.

Squid A variety of fresh squid, including swordtip squid, Japanese flying squid, and firefly squid, is caught in the Sea of Japan off the Inaba-Tajima region throughout the year. They are not only prepared as preserved food but have also recently been inspiring many cooks to invent creative dishes to bring out much more of their delicious flavors.

Sand, waves, snow, and Kirin Dance The Inaba-Tajima region includes the Tottori Sand Dunes, one of the largest systems of sand dunes in Japan, coastal areas designated collectively as the San'in Kaigan UNESCO Global Geopark, and some of the best ski slopes in western Japan. Moreover, in the seven municipalities (one city and six towns) that constitute the region, the traditional performing art Kirin Dance has been handed down for generations.

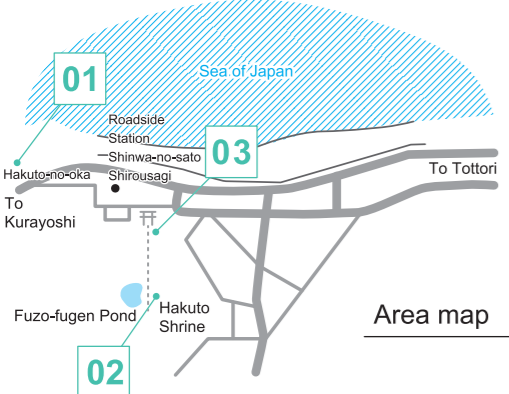
Access to the seven municipalities in the Inaba-Tajima region

From	By train (the limited express Super Hakuto from Osaka Station)	By car (starting at Osaka Station, via the Chugoku Expressway and the Tottori Expressway)							
From Osaka	<table border="1"> <tr> <td>To Tottori Prefecture</td> <td>Osaka Station</td> <td>Limited express Super Hakuto</td> <td> [Tottori City] To Tottori Station (approx. 2 hours 30 minutes) [Iwami Town] To Iwami Station (approx. 3 hours) [Wakasa Town] To Wakasa Station (approx. 3 hours) [Chizu Town] To Chizu Station (approx. 2 hours 10 minutes) [Yazu Town] To Koge Station (approx. 2 hours 20 minutes) </td> </tr> </table>	To Tottori Prefecture	Osaka Station	Limited express Super Hakuto	[Tottori City] To Tottori Station (approx. 2 hours 30 minutes) [Iwami Town] To Iwami Station (approx. 3 hours) [Wakasa Town] To Wakasa Station (approx. 3 hours) [Chizu Town] To Chizu Station (approx. 2 hours 10 minutes) [Yazu Town] To Koge Station (approx. 2 hours 20 minutes)	<table border="1"> <tr> <td>Osaka Station</td> <td>Chugoku Expressway and Tottori Expressway</td> <td> [Tottori City] To Tottori Station (approx. 2 hours 30 minutes) [Iwami Town] To Iwami Station (approx. 3 hours) [Wakasa Town] To Wakasa Station (approx. 2 hours 40 minutes) [Chizu Town] To Chizu Station (approx. 2 hours 10 minutes) [Yazu Town] To Koge Station (approx. 2 hours 40 minutes) </td> </tr> </table>	Osaka Station	Chugoku Expressway and Tottori Expressway	[Tottori City] To Tottori Station (approx. 2 hours 30 minutes) [Iwami Town] To Iwami Station (approx. 3 hours) [Wakasa Town] To Wakasa Station (approx. 2 hours 40 minutes) [Chizu Town] To Chizu Station (approx. 2 hours 10 minutes) [Yazu Town] To Koge Station (approx. 2 hours 40 minutes)
To Tottori Prefecture	Osaka Station	Limited express Super Hakuto	[Tottori City] To Tottori Station (approx. 2 hours 30 minutes) [Iwami Town] To Iwami Station (approx. 3 hours) [Wakasa Town] To Wakasa Station (approx. 3 hours) [Chizu Town] To Chizu Station (approx. 2 hours 10 minutes) [Yazu Town] To Koge Station (approx. 2 hours 20 minutes)						
Osaka Station	Chugoku Expressway and Tottori Expressway	[Tottori City] To Tottori Station (approx. 2 hours 30 minutes) [Iwami Town] To Iwami Station (approx. 3 hours) [Wakasa Town] To Wakasa Station (approx. 2 hours 40 minutes) [Chizu Town] To Chizu Station (approx. 2 hours 10 minutes) [Yazu Town] To Koge Station (approx. 2 hours 40 minutes)							
From Tokyo	<table border="1"> <tr> <td>To Hyogo Prefecture</td> <td>Osaka Station</td> <td>Limited express Hamakaze</td> <td> [Kami Town] To Kasumi Station (approx. 3 hours) [Shinonsen Town] To Hamasaka Station (approx. 3 hours 30 minutes) </td> </tr> </table>	To Hyogo Prefecture	Osaka Station	Limited express Hamakaze	[Kami Town] To Kasumi Station (approx. 3 hours) [Shinonsen Town] To Hamasaka Station (approx. 3 hours 30 minutes)	<table border="1"> <tr> <td>Osaka Station</td> <td>Chugoku Expressway and Maizuru Wakasa Expressway</td> <td> [Kami Town] To Kasumi Station (approx. 3 hours) [Shinonsen Town] To Hamasaka Station (approx. 3 hours 30 minutes) </td> </tr> </table>	Osaka Station	Chugoku Expressway and Maizuru Wakasa Expressway	[Kami Town] To Kasumi Station (approx. 3 hours) [Shinonsen Town] To Hamasaka Station (approx. 3 hours 30 minutes)
To Hyogo Prefecture	Osaka Station	Limited express Hamakaze	[Kami Town] To Kasumi Station (approx. 3 hours) [Shinonsen Town] To Hamasaka Station (approx. 3 hours 30 minutes)						
Osaka Station	Chugoku Expressway and Maizuru Wakasa Expressway	[Kami Town] To Kasumi Station (approx. 3 hours) [Shinonsen Town] To Hamasaka Station (approx. 3 hours 30 minutes)							
From Tokyo	<table border="1"> <tr> <td>To Tottori Prefecture</td> <td>Haneda Airport</td> <td>Plane</td> <td> [Tottori City] To Tottori Sand Dunes Conan Airport (approx. 1 hour 20 minutes) </td> </tr> </table>	To Tottori Prefecture	Haneda Airport	Plane	[Tottori City] To Tottori Sand Dunes Conan Airport (approx. 1 hour 20 minutes)	<table border="1"> <tr> <td>Shuttle bus</td> <td>[Tottori City] To Tottori Station (approx. 20 minutes)</td> </tr> </table>	Shuttle bus	[Tottori City] To Tottori Station (approx. 20 minutes)	
To Tottori Prefecture	Haneda Airport	Plane	[Tottori City] To Tottori Sand Dunes Conan Airport (approx. 1 hour 20 minutes)						
Shuttle bus	[Tottori City] To Tottori Station (approx. 20 minutes)								



A tour of the westernmost part of the Tottori Sand Dunes, featuring Hakuto-no-oka, a spot with breathtaking views, as well as Hakuto Shrine

This guided walking tour takes you to the Hakuto Beach area at the western end of the Tottori Sand Dunes. Experience this sandy land nurtured by the wind by climbing up the Hakuto-no-oka hill and visiting Hakuto Shrine, which is associated with an episode in Japanese mythology.



Tour time: **Approx. 1 hour 45 minutes**

- 10:00**
Meet the guide at the Roadside Station Shinwa-no-sato Shirousagi Information Corner.
- 10:10**
Enjoy walking to Hakuto-no-oka, a spot with breathtaking views.
- 11:00**
Visit Hakuto Shrine.
If you wish, try the activities for strengthening the love between you and your partner.
- 11:45**
Return to the Roadside Station Shinwa-no-sato Shirousagi Information Corner, where the tour will break up.

Tour highlights



Strolling around places of interest

A guide who is highly knowledgeable about the local area will take you to places associated with the Japanese Heritage Site of Inaba-Tajima and the Tottori Sand Dunes from the Hakuto-no-oka hill.



Hakuto-no-oka

Experience the land of sand nurtured by the wind while enjoying breathtaking views of the Sea of Japan and the Tottori Sand Dunes from the Hakuto-no-oka hill.



Hakuto Shrine

The guide will take you to Hakuto Shrine, which is associated with Japanese mythology, as well as the Hakuto Shrine Forest and the Mitarashi Pond, which is known as a pond whose water level neither increases nor decreases.



A "power spot" for lovers

Hakuto Beach has been designated as a Lover's Sanctuary. If you wish, you can purchase cute fortune slips and have a shrine seal affixed for a fee. You can even try activities such as buying a "matchmaking stone" and throwing it to the top of a torii gate!



A box of "divine revelations from the white hare" is installed on the Hakuto-no-oka hill. Try writing your wish on a coin and throwing it into the box, so your wish might be fulfilled! You can buy coins at the nearby Roadside Station.

For more details about the tour itinerary, scan this 2D code.



Japan Heritage-related delicacies

Pepenero Italia-kan

New-style pasta Bolognese with Wagyu beef and black wood ear
Pasta Bolognese with Tottori Wagyu and black wood ear

1,800 yen (including tax)

This is a meat sauce pasta that combines the delicious flavor of Tottori Wagyu beef with nutritious and tasty black wood ear. Aromatic herbs and spices add depth to the flavors. This is a healthy and filling dish.



Theme
Wagyu beef



The meat sauce adds even more richness to the dish.

It combines beef and black wood ear, both of which are said to be effective in increasing blood flow! This dish is good for both health and beauty, with the likely efficacy of two quasi-medicinal ingredients.



Made with 100% Wagyu beef from Tottori Prefecture, a high-quality beef variety, branded as Tottori Wagyu, full of a rich flavor!

Location 308-2 Yayoi-cho, Tottori City, Tottori Prefecture
Phone 0857-27-4736
Hours Lunch: 11:30-14:00 (last call 13:50)
Dinner: 18:00-23:00 (last call 22:00)
Closed 1st, 3rd, and 5th Sundays and 2nd and 4th Mondays
Distance 7 minutes on foot from Tottori Station
Parking Not available
Website <https://pepenero-italia.com/>

Kaisen Matsuri Ho-enya Wattaina Store

Boxed dish with rice topped lavishly with Wagyu beef and swordtip squid
Tottori Zeitaku-don 2,530 yen (including tax)

This dish lavishly combines Tottori Wagyu beef and swordtip squid in one box. The salty-sweet flavor of Wagyu beef and the rich aroma of aosanori (a kind of seaweed) contained in the coating of squid tempura will stimulate your appetite. This dish allows you to savor many attractive specialties of Tottori all at once.



Flavored special salty-sweet sauce, with strips of Chinese yam adding a pleasant mouthfeel!



Location 3-323 Karo-cho-nishi, Tottori City, Tottori Prefecture
Phone 0857-50-1775
Hours 11:00-14:00
Closed Wednesdays
Distance 20 minutes by car from Tottori Station
10 minutes by car from Tottori IC
5 minutes by car from Tottori Airport
Parking Available (free)
Website <https://hoenya.jp/>

Theme
Wagyu beef **Squid**



Japan Heritage-related spots

Hakuto Shrine Forest



A precious natural forest covering a hill near Hakuto Beach, a setting in Japanese mythology

Tottori Sand Dunes



One of the largest systems of coastal sand dunes in Japan, formed by sand gathered by the wind

Iwami Town



A walking tour of the San'in Kaigan Global Geopark Trail, which connects fishing villages in the Japan Heritage Site

This tour allows you to enjoy walking and trekking a "trail crossing the sea and connecting towns," as stated in the trail's concept, along Uradome Coast, a place of scenic beauty in the San'in Kaigan UNESCO Global Geopark.

Walking time:
Approx. 3 hours

Distance: 4.2km

Height difference:
80m



Tour time: Approx. 3 hours and 30 minutes

* The schedule is subject to change due to timetable revisions or other circumstances.

- 8:30 Meet at JR Iwami Station.
- 8:40 Depart from Iwami Station by municipal bus.
- 8:52 Arrive at Tajiri Fishing Port, where the trekking tour starts.
Tajiri (fishing village) → Shirawara Coast → Kamogaiso and Shuen Cave → Tsubakidani columnar joints → Mizushiri Cave and Mizushiri Valley → Ajiosaki Lighthouse → Oshiroi Cliff and Ajiro Observation Deck → Sengan Matsushima → Ajiro (fishing village)
- 12:00 Arrive at the Uradome Coast Island Cruise wharf, where the tour will break up.

Tour highlights



01

Tajiri Fishing Port

This fishing port features fresh seafood and a lively atmosphere. This maze of narrow paths and stairs is the starting point for this tour.



02

Shirawara Coast

Off the coast, to the south of the Natane-goto Islands, are beautiful emerald-green waters that are among the clearest in Japan.



03

Kamogaiso Coast

Kamogaiso Coast comprises three beaches: Okamogaiso, Tsubakidani, and Kokamogaiso. The complexly curved inlets are dotted with numerous islets, with large granules of quartz sand sparkling like crystal on the beaches.



04

Ajiosaki Lighthouse

This lighthouse is located at the highest elevation of this tour itinerary, offering a spectacular panoramic view of a series of complex rias along Uradome Coast. It was first lit in 1949.



Each fishing port has its own unique way of drying squid, so the shape of the dried squid allows you to tell which fishing port it comes from.

For more details about the tour itinerary, scan this 2D code.



TEN FORWARD

A refreshing IPA inspired by the evening scenery of Uradome Coast
URADOME COAST IPA

700 yen (including tax) (330 ml)

This West Coast IPA is inspired by the sun setting over the waves off Uradome Coast. It features a citrus- and pine-like aroma and a dry, crisp bitter flavor. A glass of this craft ale captures the scenery of the Sea of Japan.

West Coast IPA is a style of ale originating on the West Coast of the United States. It features a citrus- and pine-like aroma of hops, which fills the mouth immediately after the first sip, and a clean, crisp finish as it goes down the throat.

Representing the magnificent sunset over Uradome Coast!

Theme Wave



- Location** 2465-1 Uradome, Iwami Town, Iwami District, Tottori Prefecture
- Parking** One space for a guesthouse guest and three for brewpub guests
- Phone** 3 minutes by car from Uradome IC
- Website** <https://www.ten-forward.com/>
- Map** Major stores selling the products: Roadside Station Kinanse Iwami
- Instagram** https://www.instagram.com/ten_forward86

Japan Heritage-related delicacies

Saison is a style of ale originating in Belgium as a refreshment for breaks during summer farm work. It quenches your thirst and refreshes you.

Theme Wave

Clear ale inspired by "Iwami blue" IWAMI BLUE SAISON

700 yen (including tax) (330 ml)

This Saison-style ale is inspired by "Iwami blue," the color of the waters off Uradome Coast, which are among the clearest in Japan. Its light mouthfeel and pleasant white-wine-like aroma will bring you great comfort. This craft ale has an appealing aftertaste that evokes the feel of a pleasant sea breeze.

"Iwami blue" reproduced with natural pigments derived from spirulina!

San'in Matsushima Cruise Co., Ltd. Minato Cafe Anchor

A set meal that allows you to savor three major local specialties: Wagyu beef, pears, and Japanese scallion Kirin-no-Machi Specialty Set

Theme Wagyu beef

Single: 1,500 yen (including tax)
Double: 2,000 yen (including tax)

This special set meal allows you to enjoy Tamura Wagyu beef, pears, and Japanese scallion all at once. It offers an easy way of savoring each of these appealing specialties, making your journey even more exciting. This meal is packed with the blessings of the Inaba-Tajima region. A double cutlet burger will satisfy you 200% or more!

You can choose between a single or double minced meat cutlet burger!

This item is provided in collaboration with Niku no Tamura, a famous meat shop in Iwami Town!! This burger is filled with a minced meat cutlet (or cutlets) made with Tamura Beef from cattle lovingly raised in a rich natural environment.



With the fresh sweet flavor and aroma of pears spreading directly across your mouth, this beverage allows you to experience the entire pear—as if you were drinking it straight from the fruit with a straw.

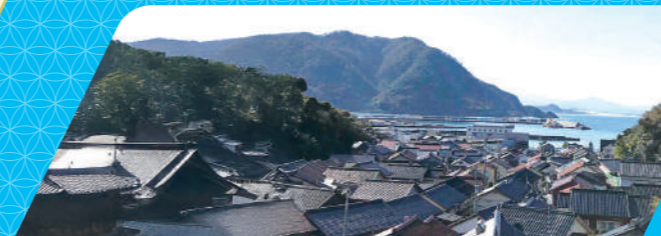


- Location** 2182 Otani, Iwami Town, Iwami District, Tottori Prefecture
- Phone** 0857-73-1212
- Hours** 9:00-15:30 (15:00 L.O.)
- Closed** Wednesdays and during the winter break
- Parking** 100 spaces for cars and five for buses (free)
- Website** <https://minatocafe.com/>
- Instagram** https://www.instagram.com/minatocafe_uradome/
- X** <https://x.com/yourunsentonari>



Japan Heritage-related spots

Fishing Villages on the Rocky Coast (Ajiro and Tajiri)



Traditional fishing villages in the San'in region facing the Sea of Japan

Uradome Coast



A spectacular coastline with strangely shaped rocks created by the raging waves and crystal clear waters

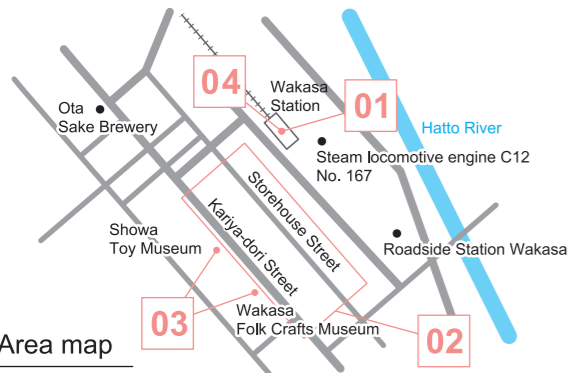
Area 03
Wakasa Town



Wind and Snow

A tour of a train terminus and an old post town in a snowy province, allowing you to immerse yourself in olden-day life in Wakasa

This tour visits Wakasa, home to the terminus of the local Wakasa Railway line. You can enjoy strolling along the streets of Wakasa-juku, a snowy post town in the olden days, while listening to local guides explaining the wisdom and lives of the locals, as well as the town's streetscape.



Tour time: **Approx. 1 hour 45minutes**

- 10:45 Meet in front of Wakasa Station.
- 10:50 Tour the paid area inside Wakasa Station, guided by Wakasa Railway staff. Take a close look at the inside of a steam locomotive.
- 11:30 Stroll along the olden-day post-town streets together with a Wakasa-juku guide. Visit Wakasa Folk Crafts Museum and Showa Toy Museum.
- 12:30 Return to Wakasa Station or the Wakasa-juku area, where the tour will break up.

Tour highlights

01

Terminal station of the local Wakasa Railway line

Wakasa Railway staff will guide you to the inside of nostalgic Wakasa Station (paid area).

02

Strolling along the post-town streets with a local guide

A local guide will take you to Storehouse Street and Kariya-dori Street while talking about the lives of people in olden-day Wakasa-juku, allowing you to enjoy strolling along the post-town streets while hearing the gentle murmur of a clear stream.

03

Retro spots for stopover

The tour also visits Wakasa Folk Crafts Museum, which displays clay bells from all over Japan, and Showa Toy Museum, a nostalgic candy store that also displays and sells toys.

04

Strolling freely after the tour

The Wakasa-juku area also has other places to stop by, such as shrines, restaurants, sake breweries, manju shops, and a station cafe. Why not stroll around the area after the tour?

On the tour, you can enter a steam locomotive on display at the station, which is preserved in working order, guided by Wakasa Railway staff.

For more details about the tour itinerary, scan this 2D code.

Japan Heritage-related delicacies



URUWASHI JAPANESE TEA

A delicious combination of two Japanese specialties: green tea and Wagyu beef
Gyokuro Wagyu Beef Rice

3,300 yen (including tax)

This dish combines rice boiled in gyokuro green tea and broth with Tottori Wagyu beef. The aroma of tea and the rich taste of meat together create a profound flavor. A recommended way of finishing the dish is to enjoy the final bites of rice with gyokuro tea poured on it.

A Japanese tea specialty store, also dealing in black tea and Chinese tea



The meat used in this dish is Tottori Wagyu beef, which is tender with sweet fat, for perfect harmony with Japanese tea. The simple salt-based seasoning brings out the natural flavor of the ingredients, creating a delicate contrast in taste and texture.

- Location** 379 Wakasa, Wakasa Town, Yazu District, Tottori Prefecture
- Phone** 070-2361-0369
- Hours** Saturdays and Sundays: 10:00-17:00
Weekdays: 11:00-17:00
- Closed** Irregularly
- Distance** 3 minutes on foot from Wakasa Station
- Parking** Not available (Please use the parking lot next to Wakasa Station.)
- Website** https://www.instagram.com/uruwashi_japanesetea/
<https://uruwashicha.official.ec/>
- Reservations** Required

Teahouse Nohanabiyori

Rice flour sable inspired by snowy scenery
Neige Sablé

These rice flour sablés are inspired by the winter scenery of Tottori. They feature the gentle sweetness and light texture of the Hoshizoramai rice variety. This baked confectionery is recommended as a gift.

- Location** 1122-12 Wakasa, Wakasa Town, Yazu District, Tottori Prefecture
- Phone** 070-8976-6231
- Hours** Lunch: 11:30-13:30
Cafe: 13:30-16:00
- Closed** Mondays, Tuesdays, and Wednesdays, as well as some Sundays irregularly
- Distance** 11 minutes on foot from Wakasa Station
- Parking** Six spaces for cars (free)
- Website** <https://www.instagram.com/nohanabiyori/>

A matcha-flavored variety has been newly added!

Theme
Sand Snow



Pack of 2 pieces
Plain: 350 yen /
Matcha flavor: 400 yen

This completely wheat flour-free delicacy is made of 100% Hoshizoramai rice flour to achieve a light texture. Since it is gluten-free, you can enjoy it without concern even if you are worried about your blood sugar level or are allergic to wheat flour.



A matcha-flavored variety, which is reminiscent of snowy mountains, has been added to Neige Sablés, inspired by the snow over the Tottori Sand Dunes. These sablés in simple form represent the winter scenery of Tottori.

Japan Heritage-related spots

Wakasa Railway

Railway facilities that retain all their vestiges from the Showa era

Storehouse Street

A street lined with a 300-meter row of white-washed storehouses

Kariya-dori Street

A street structured for pedestrians to walk under the eaves when it snows

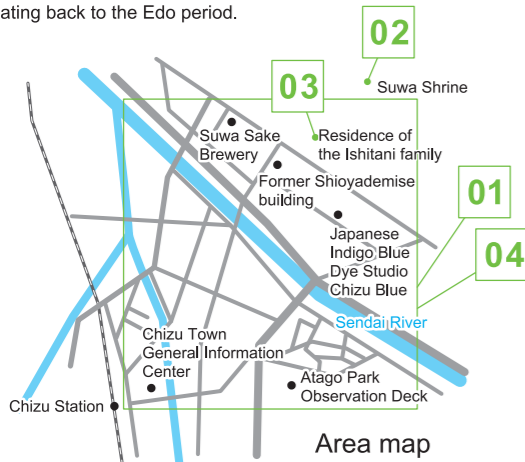
Main Residence of the Kishima Family

A typical building with kariya, or eaves overhanging toward the street



**A tour of historic spots:
Chizu-juku, an olden-day post town
known for its cedar forests
nurtured by heavy snowfall, and
the residence of the Ishitani family**

In olden days, the post town Chizu-juku flourished thanks to high-quality cedar wood nurtured by heavy snowfall. A local guide will take you on a tour of the town of cedar forests dating back to the Edo period.



Tour time: Approx. 2 hours and 30 minutes

- TOUR SCHEDULE**
- 9:30 Meet at the Chizu Town General Information Center (in front of Chizu Station).
 - 9:40 Move to the Chizu-juku area.
 - 10:00 Visit Suwa Shrine.
 - 10:30 Visit the residence of the Ishitani family.
 - 11:15 Stroll around the Chizu-juku area (the former Shioyademise building, the Suwa Brewery, etc.)
 - 12:00 Return to the Chizu Town General Information Center (in front of Chizu Station), where the tour will break up.

Tour highlights



01 A tour of the town of cedar trees, guided by a local guide

A local guide will take you on a tour of the Chizu-juku area, which was a flourishing forestry and post town.



02 Suwa Shrine

Suwa Shrine has long been loved as a scenic spot with beautiful maple leaves. It is also famous for the Onbashira Festival, which is held once every six years.



03 Residence of the Ishitani family

This residence was built by the Ishitani family, who made their fortune in forestry, using the finest wood and the most advanced construction techniques available in Japan at that time. It is designated as a National Important Cultural Property.



04 Strolling around the Chizu-juku area

In this area, there are also other places to stop by, such as the former Shioyademise building, a sake brewery, and an indigo dyeing studio. Why not stroll around the area after the tour?



The Chizu Town General Information Center "Kurashiya" sells local specialties and handmade items.



For more details about the tour itinerary, scan this 2D code.



Brun de la Montagne

A creative appetizer that combines the blessings of the mountains and the sea

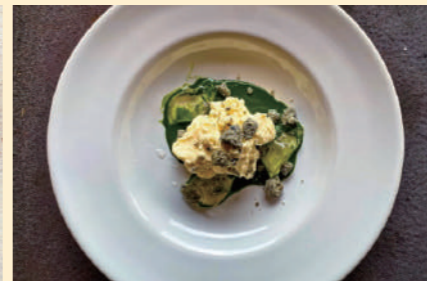
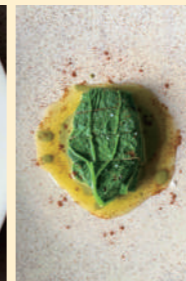
Swordtip Squid with Chizu Venison

5,500–11,000 yen (including tax)
(The dish will be served as an appetizer in the chef's-choice multicourse meal for each price range.)

This dish combines uncured venison ham from Chizu and swordtip squid. When the sticky texture of both ingredients overlaps in your mouth, you will enjoy the surprising harmony between them. The wild flavor of red venison ham is nicely complemented by the gentle sweetness of swordtip squid. The dish is served with a light mousse-like cream made from tofu and Gorgonzola. Experience a perfect combination of the tasty blessings of the local mountains and sea.



- Location 655 Hanishi, Chizu Town, Yazu District, Tottori Prefecture
- Phone 0858-71-0332
- Hours Lunch: 11:00 or 12:30
Dinner: 18:30
* All tables are served from a fixed starting time.
- Closed Irregularly
- Access 5 minutes by car from Chizu Station or Chizu IC
- Parking Eight spaces for cars (free)
- Reservations required. Two starting times for lunch and one for dinner



Residence of the Ishitani Family



A mansion on an approximately 10,000 m² site, built with a great deal of precious wood

Chizu Forest Landscape



A landscape created through the forestry activities in which local people have been engaged since the Edo period

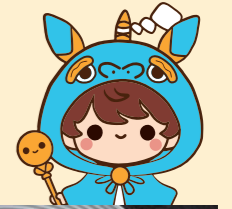
Japan Heritage-related delicacies

Theme
Squid

An appetizer made with ingredients that tell the stories of the mountains of Chizu and the sea off Tottori



Swordtip squid is an ingredient unique to Tottori. It is natural that the chef, who is from Tottori, has chosen it. This dish combines the finest ingredients prepared by artisans of the same generation as the chef, such as venison from Deai Gibier in Chizu and tofu from Hirao Toufu in Kawahara.



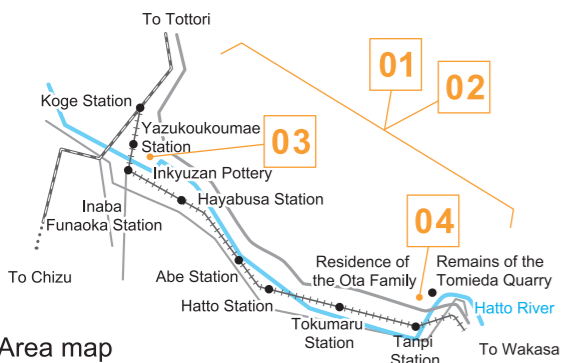
Japan Heritage-related spots

Wind and Snow



A tour of stopovers along the Wakasa Railway line, guided by the Wakasa Railway Supporters' Club

The Wakasa Line, on which Wakasa Railway currently operates, started operation in the early Showa era as a forest railway line in a snowy province. Even today, station buildings built at that time still remain. As an important means of transportation for locals, the railway has been supported by them, and in recent years, it has been popular for its tourist trains.



Area map

Tour time: **Approx. 6 hours and 10 minutes**

* The schedule is subject to change due to timetable revisions or other circumstances.

9:50	Meet at Purattopia Yazu at JR Koge Station.
10:05	Depart from JR Koge Station on board the Wakasa Railway.
10:07	Get off at Yazukoukoumae Station and walk to the next station, guided by members of the Wakasa Railway Supporters' Club, while stopping by a bakery popular with high school students and the Inkyuzan Pottery with a climbing kiln.
12:08	Depart from Inaba Funaoka Station.
12:11	Get off at Hayabusa Station for lunch and free time.
13:32	Depart from Hayabusa Station.
13:48	Get off at Tanpi Station and visit the Residence of the Ota Family, a component of the Japan Heritage Site.
15:35	Depart from Tanpi Station.
15:42	Arrive at Wakasa Station and tour the station (paid area).
16:00	The tour will break up at Wakasa Station.

Tour highlights



01

Wakasa Railway facilities registered as Cultural Properties and components of the Japan Heritage Site

A total of 23 facilities along the line, including wooden station buildings, bridges, and the turntable at the terminal station, are registered as Tangible Cultural Properties by the Japanese government and designated as components of the Japan Heritage Site. They remain as they were about 100 years ago.



03

Nostalgic local railway line

A one-day pass will be your companion during the tour of stopovers. Enjoy an in-depth local journey and the lovely scenery along the line.



02

Wakasa Railway Supporters' Club

Members of the Wakasa Railway Supporters' Club, who passionately love Wakasa Railway, guide you on a tour of stopovers along the line.



04

Residence of the Ota Family (Ota House)

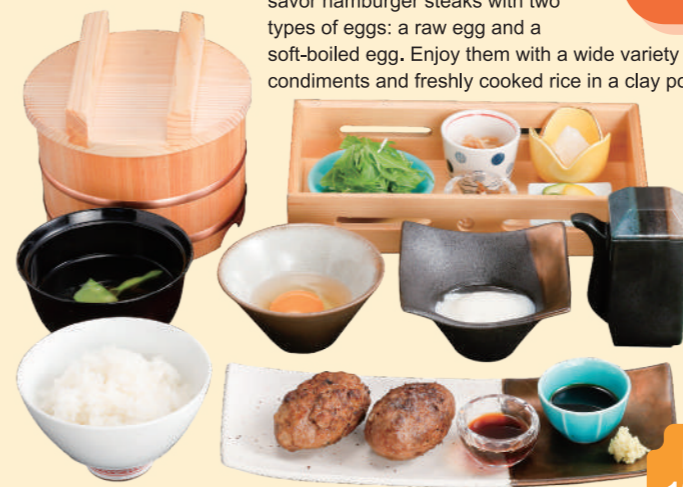
This mansion was built by a wealthy farming family in the Meiji era. Visiting it requires advance reservations. It is registered as a Tangible Cultural Property by the Japanese government and designated as a component of the Japan Heritage Site.

The tourist train and station building designed under the supervision of designer Eiji Mitooka are also worth seeing. The station with a retro atmosphere appeals to many tourists.

For more details about the tour itinerary, scan this 2D code.



This lavish set meal allows you to savor hamburger steaks with two types of eggs: a raw egg and a soft-boiled egg. Enjoy them with a wide variety of condiments and freshly cooked rice in a clay pot.



Made with 100% Tottori Wagyu beef

Location 331 Shimotsuke, Yazu Town, Yazu District, Tottori Prefecture
Phone 0570-008-658
Hours 12:00-14:30 (or 14:00 on Saturdays and days before national holidays) * Last call at 14:00 (or 13:30 on Saturdays and days before national holidays)
Closed Mondays, Tuesdays, and Wednesdays
Address 15 minutes by car from Kawahara IC
15 minutes by Yazu Bus from JR Koge Station
Parking Available (free)
Website <https://ooevalley.jp/>

Japan Heritage-related delicacies

OOE VALLEY STAY (IRORI)

Authentic charcoal-grilled Tottori Wagyu beef hamburger steaks with a delicious aroma
Charcoal-grilled Tottori Wagyu Hamburger Set Meal

Theme
Wagyu beef

1,980 yen (including tax)

The set meal features aromatic charcoal-grilled hamburger steaks made of hand-kneaded Tottori Wagyu beef. The delicious flavor of the juicy meat and Tenbi eggs go perfectly together. This lavish set meal is highly satisfying.



Oenosato Natural Farm

Theme
Kirin

Baumkuchen featuring a "KIRIN JISHI" (Kirin Dance) design, available only at limited outlets

Kirin Baumkuchen

1,490 yen (including tax)

This special Baumkuchen features a cute Kirin design that stands out against the rich-flavored cake, which contains plenty of eggs and butter. This Kirin-no-machi-exclusive sweet delicacy makes a great gift.

Rich-flavored specialty Baumkuchen branded with an eye-catching Kirin Dance-inspired design

A special red-and-white package, with red as the theme color of the Kirin Dance



* Only available at Cocogarden and on the 1st floor of Oenosato Village



The Bio Marché on the first floor offers a wide variety of products that are perfect for souvenirs and gifts.

Location 877 Hashimoto, Yazu Town, Yazu District, Tottori Prefecture
Phone 0570-077-505
Hours 10:00-17:30
Closed throughout the year
* Please access the facility's official website for details.
Address 15 minutes by car from JR Koge Station
20 minutes by car from Kawahara IC
Parking Available (free)
Website <https://www.oenosato.com/resorts/>

Theme
Sand

Gently sweet whole-bean paste made with Dainagon adzuki beans from Hokkaido

Japanese confectionery with a refined flavor, which represents the ripple marks on the sand dunes

Fumon Manju

1,080 yen (including tax)

Oenosato Baumkuchen is very popular for its delicious flavor of eggs and butter.

Fumon Manju is a moist and chewy bun made with Tenbi eggs, filled with gently sweet whole-bean paste of Hokkaido-grown Dainagon adzuki. The branded pattern represents the beautiful wind ripples on the Tottori Sand Dunes. Go ahead and try this simple yet delicious signature treat from a local farm!



Japan Heritage-related spots

Main building and platform of Inaba Funaoka Station



Main building and platform of Hayabusa Station



Hatto River Bridge No. 18



Turntable



Residence of the Ota Family



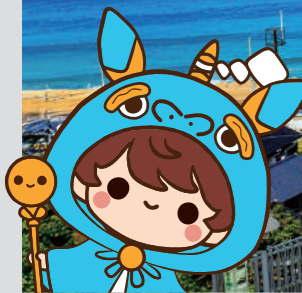
23 Wakasa Railway cultural assets, including the Wakasa Station main building, platform, and railway turntable

Railway facilities that retain all their vestiges from the Showa era

A residence structured to endure the harsh climate of this snowy region

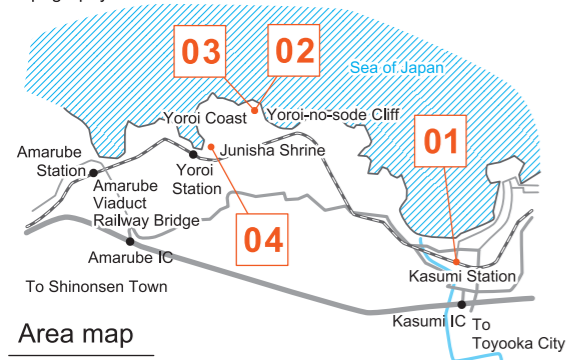
Kami Town

Wind and Waves



A tour whose highlights are Yoroi Station, a remote station known for the breathtaking view it offers, and Sky Station Amarube, which are connected by a hyperlocal railway line

The Yoroi area is home to cliffs with a series of columnar and platy joints, and its name, which means "armor," comes from the resemblance of the cliffs to samurai armor. Named after its beautiful natural features, Yoroi is a place of harmony between culture and topography.



Tour time: Approx. 4 hours and 13 minutes

* The schedule is subject to change due to timetable revisions or other circumstances.

- 10:30 Meet at the waiting room at JR Kasumi Station.
- 10:57 Depart from Kasumi Station on board the San'in Main Line.
- 11:04 Arrive at Yoroi Station and stroll around Yoroi Fishing Port and Junisha Shrine.
- 12:38 Depart from Yoroi Station.
- 12:42 Arrive at Amarube Station, stroll around Amarube, and have free time for lunch at the Roadside Station.
- 14:33 Depart from Amarube Station.
- 14:43 Return to Kasumi Station, where the tour will break up.

Tour highlights



01 Kasumi
The tour starts on board a hyperlocal train departing from Kasumi, a town famous for its crabs. Don't forget to take a commemorative photo with the crab claw statue.



02 Yoroi
Here, you will visit a station with a spectacular view of a port, and stroll around a fishing village that used to catch tuna. Around late April to early May, visitors are greeted a spectacular sight of 100 carp streamers floating over the port.



03 Yoro Coast
This coast is a spot of scenic beauty with magnificent columnar joints, cliffs, caves, caverns, reefs, etc. created by marine erosion.



04 Junisha Shrine
The Kirin Dance is performed as an offering on October 5 every year. Yoroi is the easternmost area where the Kirin Dance has been handed down. The distinctive features of its Kirin Dance are the Kirin's black head wound up with thin ropes to which three paper strips are attached and the demonic shojō mask.



The original Amarube Viaduct Railway Bridge used to overlook the San'in Main Line since its completion in 1912. With its three piers on the station side preserved on site, the bridge was reborn as an observation facility called "Sky Station."

For more details about the tour itinerary, scan this 2D code.



Lean beef is grilled after being soaked in salty-sweet Yuan sauce, which contains citrus juice, to maximize its rich yet delicate flavor. The pleasant aroma is certain to appeal to you.

KAN-ICHI

A set meal that brings together the blessings of the sea and mountains of Tajima

Tajima Beautiful Aroma Meal

6,900 yen (including tax)

This luxurious set meal allows you to enjoy the charms of locally produced ingredients, including Tajima Beef, all at once. The ingredients are all cooked in a way that fully brings out their natural flavors, to represent local gastronomic culture. This set meal highlights enjoyable flavors unique to Tajima.

Location 308 Kasumi-ku Nanukaichi, Kami Town, Mikata District, Hyogo Prefecture

Phone 0796-39-1147

Hours 11:00–last call 14:00 * The set meal is served in limited quantities per day.

Closed Wednesdays

Access 5 minutes on foot from JR Kasumi Station

Parking 30 spaces for cars (free)

Website <https://kan-ichi.jp/>

Japan Heritage-related delicacies

Theme **Wagyu beef**



Half of a boiled Kasumi Crab lavishly served!

You can enjoy an impressive variety of parts of Tajima Beef, which local people are so proud of.

A dining experience in a snow igloo that you cannot have anywhere else



Tajima Highlands Botanical Garden

Theme **Wagyu beef**

A special tasting experience to savor the great depth of Tajima Beef

Multicourse Meal for Tasting 61 parts of Tajima Beef

30,000 yen (including tax) for 2 servings

This special multicourse meal is designed to allow you to compare 61 parts of Tajima Beef, the specialty Wagyu beef brand of Tajima. You can savor the different textures and flavors of all those parts. This is a luxurious dining experience that you cannot have anywhere else.

The facility can serve extremely fresh high-quality meat because it also has a meat shop.

Location 709 Muraoka-ku Wachi, Kami Town, Mikata District, Hyogo Prefecture

Phone 0796-96-1187

Hours 9:00–17:00

Closed Thursdays from December to the end of March; open every day in the rest of the year

Email shokubutsuen@outlook.com

Access 10 minutes by car from Fukuoka Hachikita-guchi Bus Stop
40 minutes by car from JR Yoka Station

Parking Available (free) (The admission fee is charged separately.)

Website <https://tajima-garden.jp/>

Reservation <https://tajima-garden.jp/net-reservation/>

Reservations required

Please visit the botanical garden in warm clothes in winter. Be sure to equip your car with studless snow tires.



Japan Heritage-related spots

Fishing villages on the rocky coast (Yoroi and Amarube)



Fishing villages with "wind-escaping" ports on Tajima Coast

Junisha Shrine



Shrine in the Yoroi hamlet, with a unique black Kirin head

Amarube Viaduct Railway Bridge



A viaduct crossing the waters between 40-meter high cliffs

Area 07 Shinonsen Town

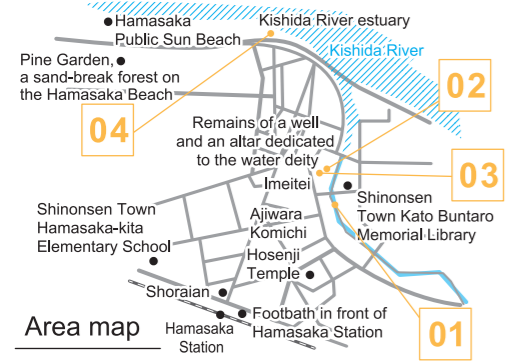
Sand Theme
Walking

Wind and Sand



A tour of Hamasaka, a sturdy town built on a sandbar that has survived in a harsh natural environment

Hamasaka is a town built on a sandbar. Its name, in which hama and saka mean "beach" and "slope," respectively, comes from a description of its geographical feature: "a town with a slope on the beach." Why not stroll around this town and experience the harmony between the history and nature?



Tour time: Approx. 2 hours and 30 minutes

- 9:30 Meet at the Town Walking Information Center (in front of JR Hamasaka Station)
- 9:45 Stroll along Ajiwara Komichi.
- 10:20 Visit Imeitei.
- 10:50 Stroll around the town built on a sandbar.
- 11:10 Visit the estuarine sandbar and sand-break and windbreak pine forests.
- 12:00 Return to the Town Walking Information Center "Shoraian," where the tour will break up.
* You can listen to music in the audio room if you wish.

Tour highlights



01

Ajiwara Komichi
This esplanade along the Ajiwara River was lined with large merchant houses, where goods were loaded and unloaded from the river. The way the stones in the magnificent stone wall are piled differs depending on when each part of the wall was constructed.



02

Remains of a well and an altar dedicated to the water deity
The remains of a well will make you imagine the lives and faith of people living on the sandbar at that time.



03

Hamasaka Predecessors Memorial Hall "Imeitei"
This memorial hall was originally the residence of a pawn shop owner in the Edo period and still retains the atmosphere of a merchant's house in the olden days. There is also a Kirin mask used in the Kirin Dance on display.



04

Former Hamasaka Fishing Port and Kishida River estuary
The Kawasuso Festival is held at the confluence of the rivers where the Kirin Dance is performed.

Since manufacturers of needles, including those for gramophones and record players, are based in the town, the Town Walking Information Center "Shoraian" exhibits gramophones and records donated from inside and outside the town, and some of the records are actually played here.



For more details about the tour itinerary, scan this 2D code.



Obaa Cafe

A specialty pasta cooked by obaa ("grannies"), with the delicious taste of squid filling your mouth
Koji-pickled Dried Squid Pasta (served with clam soup and tea)

1,200 yen (including tax)

This specialty pasta is topped with plenty of homemade dried squid pickled in koji, a fermented preparation. The gentle salty taste of koji and the rich flavor of squid combine with oil-coated noodles to create a profound flavor. This dish harmoniously blends Japanese and Western cuisine in a way unique to Obaa Cafe.



Theme
Squid

The gentle saltiness and rich flavor of koji mixes well with the noodles!



Theme
Squid

The cafe displays many cards on which quotations from the grannies are written, as well as a lot of souvenirs. They fervently hope you will visit Obaa Cafe to see them!



Dried squid pickled in koji goes well with anything!

In the snowy mountainous region of Tajima, Hyogo Prefecture, each household has handed down the way of pickling dried squid in koji as a preserved food for winter. Obaa Cafe values traditional flavors in the hope of passing on the wisdom and flavors handed down in this area to younger generations.

- Location** 82-1 Yu, Shinonsen Town, Mikata District, Hyogo Prefecture
- Phone** 0120-037-329
Since Obaa Cafe does not have a landline phone, this is the phone number of Yuzukitei, which is housed in the same building as Obaa Cafe.
- Hours** 10:00-17:00
- Closed** Tuesdays and Thursdays (Reservations for days off are accepted if made in advance.)
- Access** 30 seconds on foot from Yumura Onsen
- Parking** Please use the pay parking lot at the Yumura Onsen Yakushiyu bathhouse.
- Website** <https://www.yuzukitei.com/>
https://www.instagram.com/yuzukitei_kuromamecha/
- Reservation** <https://www.tiktok.com/@obacafe.76>
<https://www.youtube.com/@obacafe>
- Notes** Reservations required in advance. If you wish to make a reservation, please call us no later than three days before your planned visit.

Enjoy a traditional koji dish from Tajima together with steam.

Koji -pickled Dried Squid Topped with Blanched Vegetables and Egg (served with daikon radish pickles made by obaa ["grannies"] and tea)

500 yen (including tax)

Eggs and seasonal vegetables are boiled in water from the nearby Arayu hot spring and carefully cut and served at Obaa Cafe. Boiling in Arayu water brings out the natural flavors and sweetness of the ingredients, as well as making the eggs softer and the vegetables fluffier.



* Please bring the vegetables and eggs with you. (Obaa Cafe does not sell them.)

Sprinkled with brown sugar powder, inspired by sand

Theme
Sand



Roadside Station San'in Kaigan Geopark Hamasaka no Sato

Enjoy a new style of soft serve ice cream that is a modern interpretation of traditional confectionery.
Tochimochi Soft Serve

580 yen (including tax)

This sweet delicacy is a modern interpretation of *tochimochi* or rice cake containing horse chestnuts, a traditional favorite of people in the San'in region. Its simple flavor and gentle sweetness fill your mouth.

Sweets that combine *tochimochi* with adzuki-bean paste have long been popular, so the addition of soft serve ice cream to that delicious combination surely appeals to various generations.



- Location** 57 Tochidani, Shinonsen Town, Mikata District, Hyogo Prefecture
- Phone** 0796-80-9010
- Hours** 9:00-18:00 (or 17:00 in winter)
- Closed** January 1
- Access** 5 minutes by car from JR Hamasaka Station
- Parking** 40 spaces for cars and four for buses (free)
- Website** <https://hamasakanosato.com/>

Fishing village on the rocky coast (Hamasaka)



Hamasaka Port is one of the fishing ports with the largest catches of snow crabs, firefly squid, etc. in Japan.

Japan Heritage-related spots

Hamasaka-Ajiwaragawa District



Landscape of a town built on a sandbar made of sediment carried by a river

TOUR SCHEDULE